

DAS  
BOX

# A WATCHDOG ALWAYS CONNECTED

## HOW DO YOU COLLECT DATA ABOUT THE REAL WORLD?

DASBOX is a subscription-based service to collect, analyze and report back on any kind of physical data.

At DASBOX we realized that information on the web is easily accessible using your phone or tablet. But how do you find information about things and other objects in the physical world? The DASBOX service includes a series of data capture devices that collect 40 types of useful information.

The data is automatically sent to our own AI for analysis.

You receive monitoring alerts and get unlimited access to the collected information.

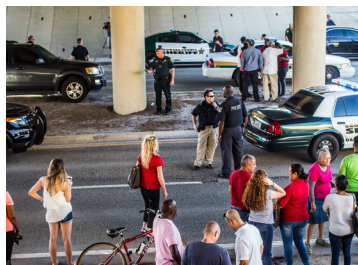
**Information you would not have otherwise.**

FULLY  
INDEPENDANT  
MONITORING  
ANALYSIS &  
REPORTING ON:  
AIR QUALITY  
NOISE  
WATER  
SMOKE  
MOVEMENT  
VIBRATION  
GEOLOCATION  
TEMPERATURE  
DUST  
POLLEN  
GUNSHOTS  
LIGHT  
HUMAN PRESENCE  
IMPACT  
ELECTRICAL  
ALCOHOL  
HEADING  
SPEED  
DRIVING PATERNS  
TOXIC GASES  
ADD 10 OF YOUR OWN



### Avoid stock losses

Track and monitor your precious cargo anywhere in the world. Geolocate your goods and watch the environmental conditions.



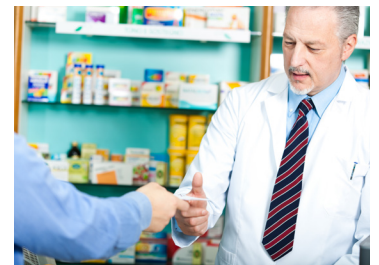
### Safety and security first

Get immediate alerts to unwanted situations in your Community - fire, water, gunshots and most natural or man-made disasters.



### Watch your precious assets

Smart homes are cool until you run out of power and Wifi. The DASBOX Watchdogs are always connected... and do not need Wifi.



### Connect your business

Your alarm system warns you but DASBOX monitors and also collects valuable business data to protect and move your business forward.

And these are just four use cases! We collect, monitor and report on 40 different data types for your business or for yourself. **DASBOX is the WATCHDOG ALWAYS CONNECTED.**

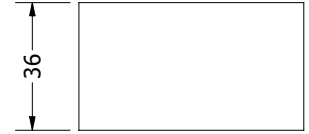
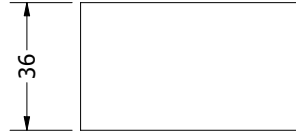
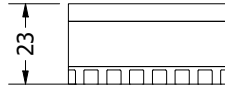
DAS  
BOX

[www.dasbox.io](http://www.dasbox.io)



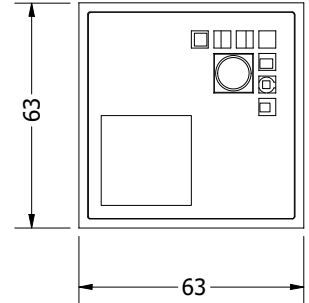
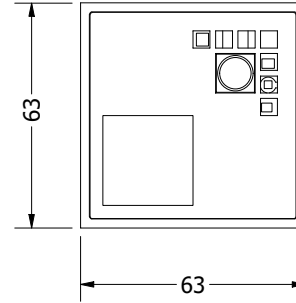
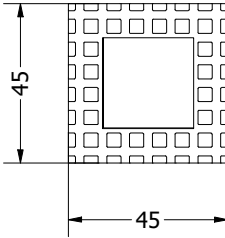
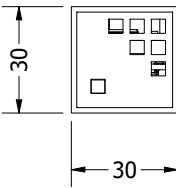
Each DASBOX Data Collection Unit (DCU) is created with the Swiss army knife approach in mind. Numerous uses for numerous vertical markets. Enquire at DASBOX to get a full sense - pun intended - of the possible use cases for our DCUs.

**TOP VIEW**



All dimensions in mm.  
Do not scale.  
Informative values only.  
Models may change.

**FRONT VIEW**



**PRODUCT**

**PUPS**  
ALL PURPOSES

**GATE**  
ALL PURPOSES

**COOL**  
HEALTHCARE

**OEM**  
INDUSTRIAL

**Specification - General**

BLE / LoRa	Yes	Yes	Yes	Yes
2G, 3G, LTE	No	Provided	Provided	Provided
RS-232	On demand - License	On demand - License	On demand - License	Yes
Sensors included	Any one sensor available in the list of sensors below.	No	Temperature, Atmospheric Pressure, Humidity Level, Vibration, Shock, Movement.	Temperature, Atmospheric Pressure, Humidity Level, Vibration, Shock, Movement, Sound Level, Light Intensity, Toxic Gases, Human Presence, Ozone.
Geolocated	No (different unit)	Yes	Yes	Yes

**CAPTURE**

Data is captured by one, or many, sensors located within our Data Capture Units. Each unit comes complete with a Li-Po battery, a USB charger. A number of optional mounting brackets are available to facilitate the installation.

**TRANSPORT**

Data transport is provided by DASBOX as part of the service. We use a mix of Mobile, BLE and LoRa protocols in a mesh network and the security is assured by a proprietary Blockchain security mechanism.

**ANALYZE**

Data analysis is achieved on the DASBOX cloud. Envelope Analysis and Trends Analysis is performed on each data point captured.

**DELIVER**

Results are delivered to the end user via our API, by SMS, email, and voicemail. Thus, providing a number of ways for you to get your data and your actionable alerts.

**Sensors available**

TEMPERATURE	Range: -40C, +85C Precision: ±1.0C
PRESSURE	Range: 300-1100 hPa Precision: ±1.0 hPa
HUMIDITY	Range: 0-100% Precision: ±3 %RH
SOUND LEVEL	Range: 20Hz to 10KHz Sensitivity: 94 dB SPL @ 1 kHz = -26 dB
LIGHT INTENSITY	Range: 600M:1
PRESENCE	Field of view: theta1=theta2=45deg.
OZONE	O3: (10-1000ppb)
RADIATION	Gamma: 1-1000 keV, nom. 10keV

**Sensors available (cont'd)**

ACCELERATION 3 AXIS	±2g/±4g/±8g/±16g Orientation detection Free-fall detection Motion detection
GEOLOCATION	99 acquisitions 33 tracking channels Tracking sensitivity: -165dBm Update every 5 secs.
TOXIC GASES	CO: (1- 000ppm) NO2: (0.05-10ppm) C2H6OH: (10-500ppm) H2: (1 - 1000ppm) NH3: (1 - 500ppm) CH4: (>1000ppm) C3H8: (>1000ppm) C4H10: (>1000ppm) H2S: (1-100ppm)

Proudly distributed by:

